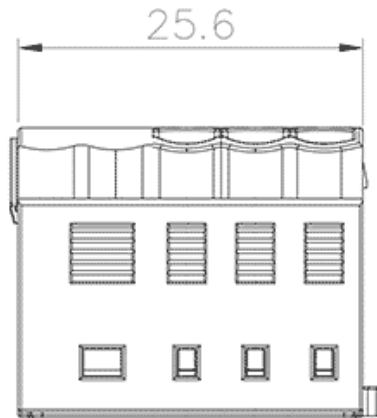
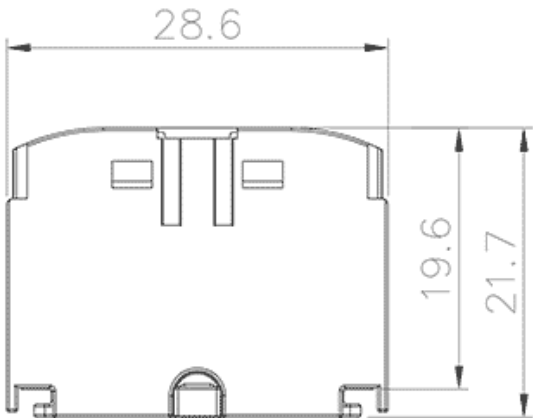


Product Type: Push-in type power distribution block

Product Name:TPA6-2.5-7-GY-Input

Product Description: Connection method:Push-in connection, Rated Current:41A, Rated Voltage:450V, Number of connections : 7, Number of levels : 1, Cross section:0.5-10mm², AWG:20-8AWG

Product Size



Parameters

⌘ SUPU ID	TPA6/1.5-7-GY
⌘ Number of levels	1

☞ Number of connections	7
☞ Connection method	Push-in connection
☞ Protection Level	IP20
☞ Insulation material	PA66
☞ Insulation material group	I
☞ Contact material	Copper alloy
☞ Contact plating	Sn,Plated
☞ Ambient temperature (operation)	-40°C~105°C
☞ Ambient temperature (assembly)	-5°C~70°C
☞ Ambient temperature (storage)	-25°C~60°C
☞ Permissible humidity (storage/transport)	30%~70%
☞ Potentials	1

Technical data

☞ IEC Rated Current	41A
☞ IEC Rated Voltage	450V
☞ Overvoltage category	III
☞ Degree of pollution	3
☞ Rated impulse voltage	6KV
☞ UL Rated Current	50A
☞ UL Rated Voltage	300V
☞ Conductor cross section rigid	0.5-10mm ²
☞ Conductor cross section flexible	0.5-6mm ²
☞ Conductor cross section flexible,with furrule	0.5-6mm ²

☞ Stripping length	10-12mm
☞ Use group	B/C
☞ Rated cross section	20-8AWG

Commercial data

☞ Order No	TPA6/1.5-7-GY
------------	---------------

Ningbo SUPU Electronics Co., Ltd.

Address: No. 150, Xinxing 4th Road, High-tech Industrial Development Zone,
Cixi City, Zhejiang Province, China

Zip code: 315303

Switchboard: +86 574-63288158

Fax: +86 574-63288170

E-mail:supucontact@supu.cn

Service Hotline: 400-626-6336



Wechat