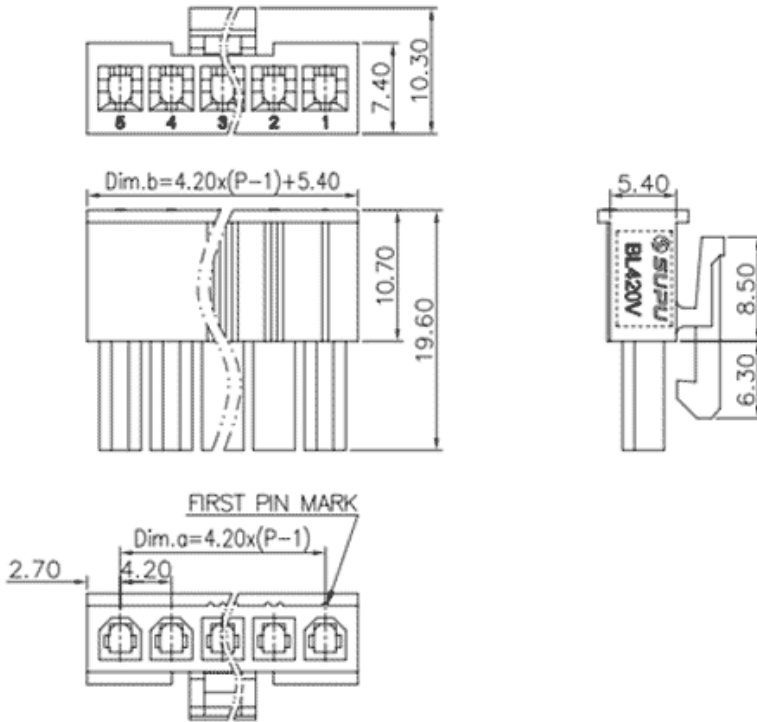


Product Type: Crimp terminal

Product Name: BL420V1XXF-WT-0000

Product Description: Pitch: 4.20mm Rated Voltage : 600V 1 row, 2 column CE

### Product Size



### Parameters

☞ SUPU ID	BL420V1XXF-WT-0000
☞ Pitch	4.2
☞ Number of levels	Single layer
☞ Number of connections	XX

☞ Connection method	Cold Pressure Wiring
☞ Protection Level	IP20
☞ Operating temperature range	-40~+105°C
☞ Insulation material	PA66
☞ Insulation material group	I
☞ Contact material	-
☞ Contact plating	-
☞ Color	White/Red/Black

## Commercial data

☞ Order No	BL420V1XXF-WT-0000
------------	--------------------

### Ningbo SUPU Electronics Co., Ltd.

Address: No. 150, Xinxing 4th Road, High-tech Industrial Development Zone,

Cixi City, Zhejiang Province, China

Zip code: 315303

Switchboard: +86 574-63288158

Fax: +86 574-63288170

E-mail:supucontact@supu.cn

Service Hotline: 400-626-6336



---

Date:2026-04-25 10:20

The right to modify data belongs to SUPU.